



LIVELINE

Issue 1, Number 15
February 28th, 2006

PRODUCED BY KATIE LIBECCO

TUESDAYS & THURSDAYS, 4:30 - 5:00 P.M.
STUDIO AIRLINE (330) 941-2030

WWW.HOMEWORKEXPRESS.ORG
HOMEWORKEXPRESS@GMAIL.COM

JIM STIPETICH, EXECUTIVE PRODUCER
JMSTIPETICH@YSU.EDU

AMY GRABAN-CRAWFORD, PH.D., ASSOCIATE PRODUCER
ALGRABAN@YSU.EDU

BILL BROPHY, ASSOCIATE PRODUCER
WEBROPHY@YSU.EDU

FRED OWENS, PH.D., PROJECT DIRECTOR
FOWENS@CC.YSU.EDU
(330) 941-1855

HE Coverage Area Expands

Homework Express is currently working your local cable providers to expand our coverage area – so more people in more places can watch our show!

We're currently working with Time Warner to begin airing the show live in Columbiana and Summit counties. We're also currently airing a delayed broadcast of our show in Cleveland.

If you want to help Homework Express expand our coverage area and abilities, call our producers at (330) 941-1855 or your local cable providers.

Homework Express

Tuesdays and Thursdays
4:30 – 5 p.m.

YOUNGSTOWN

Time Warner Cable Channel 9

TRUMBULL

Time Warner Channel Cable 16

MAHONING

ARMSTRONG Channel 20

Express Test Review

Most schools will begin a week of OGT testing on March 6, so with the help of Liberty High School's Mr. Jim DeToro, we'll be airing review segments that include information students will find on their tests.

The Express Test Reviews began airing Feb. 28 – but there's still more to come!

Subscribe to LiveLine

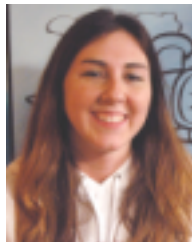
To subscribe Homework Express's newsletter, just e-mail fowens@cc.ysu.edu with "LiveLine" in the subject line.

Have you been watching?

...because if you haven't, you've missed the exciting things happening in Dr. Mike Serra's Science Corner on Homework Express! A chemistry professor at YSU, Serra has performed experiments demonstrating laws of science with balloons, candles, dry ice and more! He's got a lot more in store for viewers, so make sure you tune in to see more from Serra in the Science Corner.

A Quote on Education: "It is the supreme art of the teacher to awaken joy in creative expression and knowledge." Albert Einstein

Floor Manager – Ashley Himes



As a student in the telecommunications program at YSU, with a marketing minor, Ashley Himes balances a hectic production schedule. She serves as the floor director for Homework Express and interning for the sports department at WFMJ.

Ashley said she became involved with Homework Express because it sounded fun and interesting.

"The experience has just been amazing for me, and I've met a lot of great people working with the show," she said.

During the show's broadcast, Ashley is responsible for making sure everything runs smoothly in the studio. She's responsible for what happens on the set, coordinating the teachers and host with what is happening technically in the control room.

Mayor Williams Visits



The mayor of Youngstown, Jay Williams, visited the set of Homework Express and appeared on the show Thursday, February 23.

PARTNER PROFILE



In 1950, the first Dunkin' Donuts shop was opened in Massachusetts and licensed the first of many franchises in 1955.

They are the world's largest coffee and baked goods chain, serving more than 2.7 million customers every day. They sell 52 varieties of donuts and more than a dozen coffee beverages as well as bagels, breakfast sandwiches and other baked goods.

There are over 6,000 Dunkin' Donuts in 30 countries. In the U.S. there are over 4,400 Dunkin' Donuts locations. Internationally, there are over 1,700 Dunkin' Donuts locations in 29 countries. Their sales exceed \$3.6 billion – yearly!

For more information, just visit www.dunkindonuts.com.