



# LIVELINE

Issue 1, Number 11  
January 1st, 2005

PRODUCED BY KATIE LIBECCO

TUESDAYS & THURSDAYS, 4:30 - 5:00 P.M.  
STUDIO AIRLINE (330) 941-2030

[WWW.HOMEWORKEXPRESS.ORG](http://WWW.HOMEWORKEXPRESS.ORG)  
[HOMEWORKEXPRESS@GMAIL.COM](mailto:HOMEWORKEXPRESS@GMAIL.COM)

JIM STIPETICH, EXECUTIVE PRODUCER  
[JMSTIPETICH@YSU.EDU](mailto:JMSTIPETICH@YSU.EDU)

AMY GRABAN-CRAWFORD, PH.D., ASSOCIATE PRODUCER  
[ALGRABAN@YSU.EDU](mailto:ALGRABAN@YSU.EDU)

BILL BROPHY, ASSOCIATE PRODUCER  
[WEBROPHY@YSU.EDU](mailto:WEBROPHY@YSU.EDU)

FRED OWENS, PH.D., PROJECT DIRECTOR  
[FOWENS@CC.YSU.EDU](mailto:FOWENS@CC.YSU.EDU)  
(330) 941-1855

## Happy New Year!

The producers, cast and crew of Homework Express want to wish our audience and partners the best of luck in 2006! As we enter our second season, we'd also like to thank all of your support. Another year means new and exciting opportunities – even for Homework Express! Keep watching to see what happens in 2006.

## Brain Builders and Photos

We're still looking for your best riddles, games and brain teasers to use in our Brain Builder segment. If we use yours, host Kelly Stevens will announce your name during the show and we'll include your name in the next LiveLine.

We're also still looking for photos of viewers doing their homework for our website and a video montage. If you have photos of your students or children doing their homework, we'd love to see them! Share Brain Builders and photos with us by sending an e-mail to [HomeworkExpress@gmail.com](mailto:HomeworkExpress@gmail.com). Remember to include contact information.

## Homework Express

Tuesdays and Thursdays  
4:30 – 5 p.m.

### YOUNGSTOWN

Time Warner Cable Channel 9

### TRUMBULL

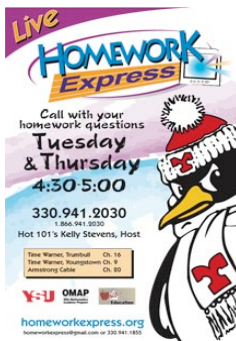
Time Warner Channel Cable 16

### MAHONING

ARMSTRONG Channel 20

## Homework Express Poster

Support a local TV show helping area students by sharing our poster. E-mail producers, or save this image and print it out at home. Hang in your class, give to students and distribute to friends. Help us tell everyone about the show!



## Subscribe to LiveLine

To subscribe to the free, online newsletter of Homework Express, just e-mail [fowens@cc.ysu.edu](mailto:fowens@cc.ysu.edu) with "LiveLine" in the subject line.

## Other Versions

Although it's the first of its kind in this area, Homework Express is not the first live, homework help television show.

In Rochester, N.Y. students can call and watch Homework Hotline, produced by WXXI-TV in cooperation with the Rochester Teachers Association's Dial-A-Teacher program. It airs during the school year Monday through Thursday at 5:30 p.m. In West Virginia, students can watch Homework Hotline on PBS Monday through Thursday at 5 p.m.

Hillsborough County Schools around Tampa, Fla., produce Math Homework Help Mondays, Wednesday and Thursdays at 5 p.m. Catered specifically for math, this program work hand-in-hand with a website.

## PARTNER PROFILE



Alice Handel began selling homemade ice cream out of her husband's service station on Market Street in 1945. She sold the store to Len Fisher in 1985.

Today, there are about 40 locations of Handel's Ice Cream in five states, that each make around 200 gallons of ice cream every day! There are about 200 different flavors of Handel's Ice Cream. Their signature flavor is chocolate pecan. Handel's Ice Cream is 100 percent natural, with no preservatives, additives, or artificial flavors.

Handel's Homemade Ice Cream & Yogurt stores are open year-round. Find out more by visiting: [www.handelsicecream.com](http://www.handelsicecream.com).

## Photo Challenge

There's still time for students to participate in the Homework Express Photo Challenge! Students can start by visiting [www.homeworkexpress.org](http://www.homeworkexpress.org), where we'll more of a photograph every Tuesday and Thursday. Then, they can send their answers to [homeworkexpress@gmail.com](mailto:homeworkexpress@gmail.com) or:

Homework Express  
College of Fine and Performing Arts  
Youngstown State University  
Youngstown, Ohio 44555

Watch Jan. 10<sup>th</sup> when we'll select the name of a student to win an MP3 player live, on air.